

Fine Art Bridging Project

Time and Space in Still Life

2. Exploring Technical Processes

Task 2 Explore

After researching your chosen artists on the previous tasks, use the following slides to produce your own photography in a similar style. Create a variety of scenarios around your home and document using the effects suggested. Aim to produce a photo shoot of 20 images.

Equipment needed:

A torch or lamp/lamps

Still life objects

Table or surface

Fabric

Possibility of darkening a room

Camera, phone or tablet

Tinfoil – can be used over a plate to cast light on a subject.

It is crucial that you create your own sources to work from during the A Level course. By doing so you can focus on your own subject matter and direct attention to what you feel is important.

Manipulating and producing a scene or situation through photography requires a variety of methods. The following slides will show you how to achieve this in more detail.

Produce your photographs using the three techniques on the following slides –

- Baroque
- Dutch Realist style
- Chiaroscuro

Use the websites below to help you further –

Creating Dutch realist style still life photography

<https://www.digital-photo-secrets.com/tip/5782/still-life-images/>

Still life photography guide

<https://www.format.com/magazine/resources/photography/still-life-photography-ideas-and-tips>

After your previous research, decide carefully how you will show a sense of time and space in your photography. Consider carefully what your subject will be.

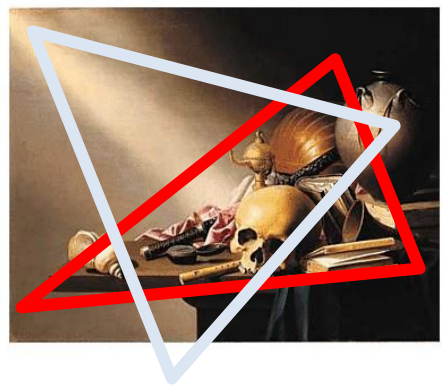
- Consider how you arrange the objects if you are focussing on a still life.
- Will the objects symbolise your life or the life of someone you know?
- Could they reflect a sense of ageing? For example, a decaying flower, piece of old fruit, baby's shoe?
- Do they suggest a moment in your life now – a transitory stage we are currently in. A reference to the world outside through a window, a darkened room with objects on the side?
- Are you commenting on hope or hopelessness in life? Is a bed unmade? Are clothes on the floor? Are buds about to bloom in a vase?
- Does light shine on a particular object to suggest positivity or negativity?
- Are you reflecting a scenario that suggests someone is present, whilst not being there?
- Could you comment on throw away culture – have you included plastic bags, rubbish or food waste?
- How does the content of your photography link to the artists you have investigated?
- When we look at a still life painting, it tells a narrative of a life, a moment or a scenario. How does yours?
- **Write down your intentions for your photo shoot. What story are you telling?**



<https://www.youtube.com/watch?v=BJQYSPFo7hk>



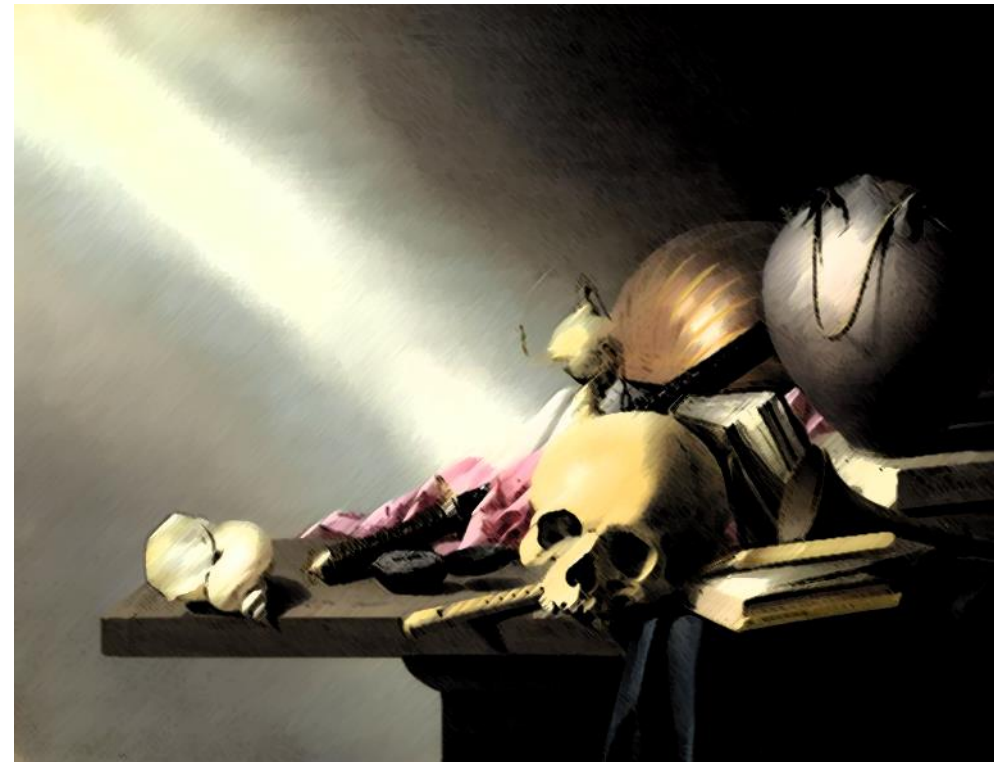
Lighting



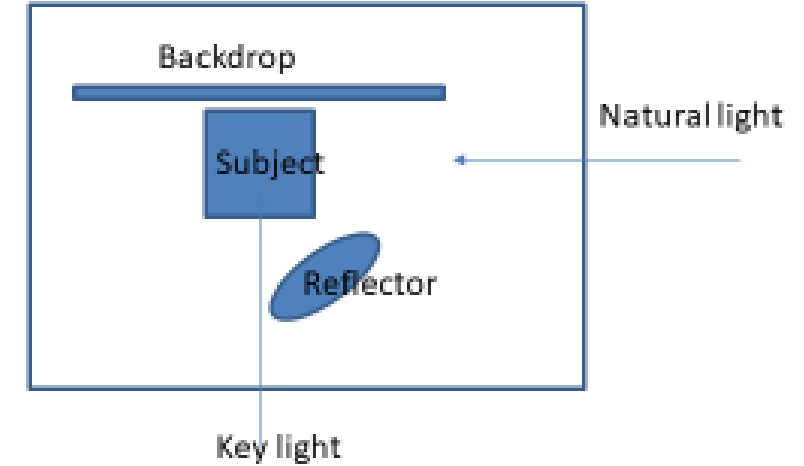
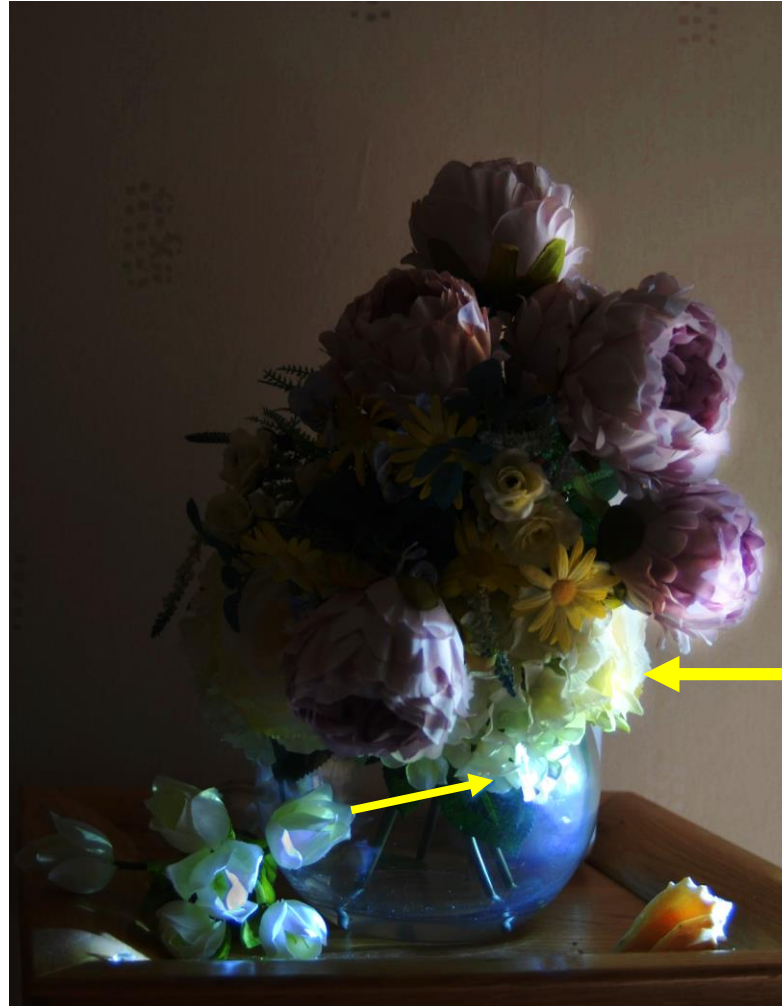
These slides demonstrate how to recreate lighting in an older style for still life settings using basic equipment. If you do not have access to proper studio lights it does not matter. You may use plain lamps or torches as long as they are placed at the angles suggested on each diagram.

The lighting techniques shown mimic those that were used by still life painters to create a narrative. Due to the lighting used the viewer's eye can be guided towards a particular subject or several items can be emphasised. The objects and lighting are arranged to create a triangular focus.

Note how the light creates a sense of perspective in the pieces, which you can use to create a focussed composition.



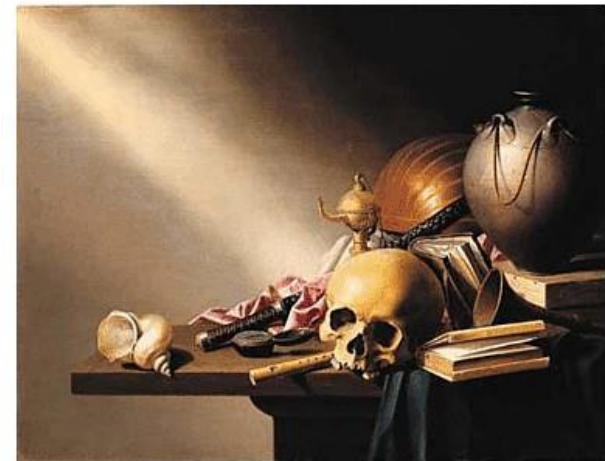
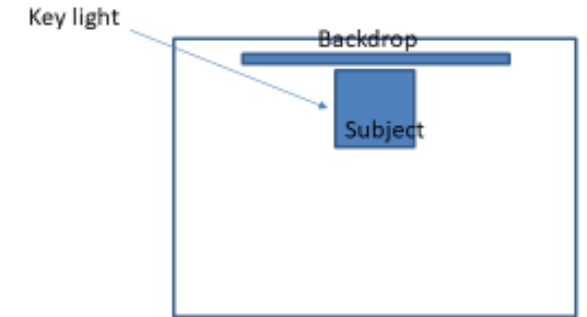
Baroque style with highly lit subject and accented edges



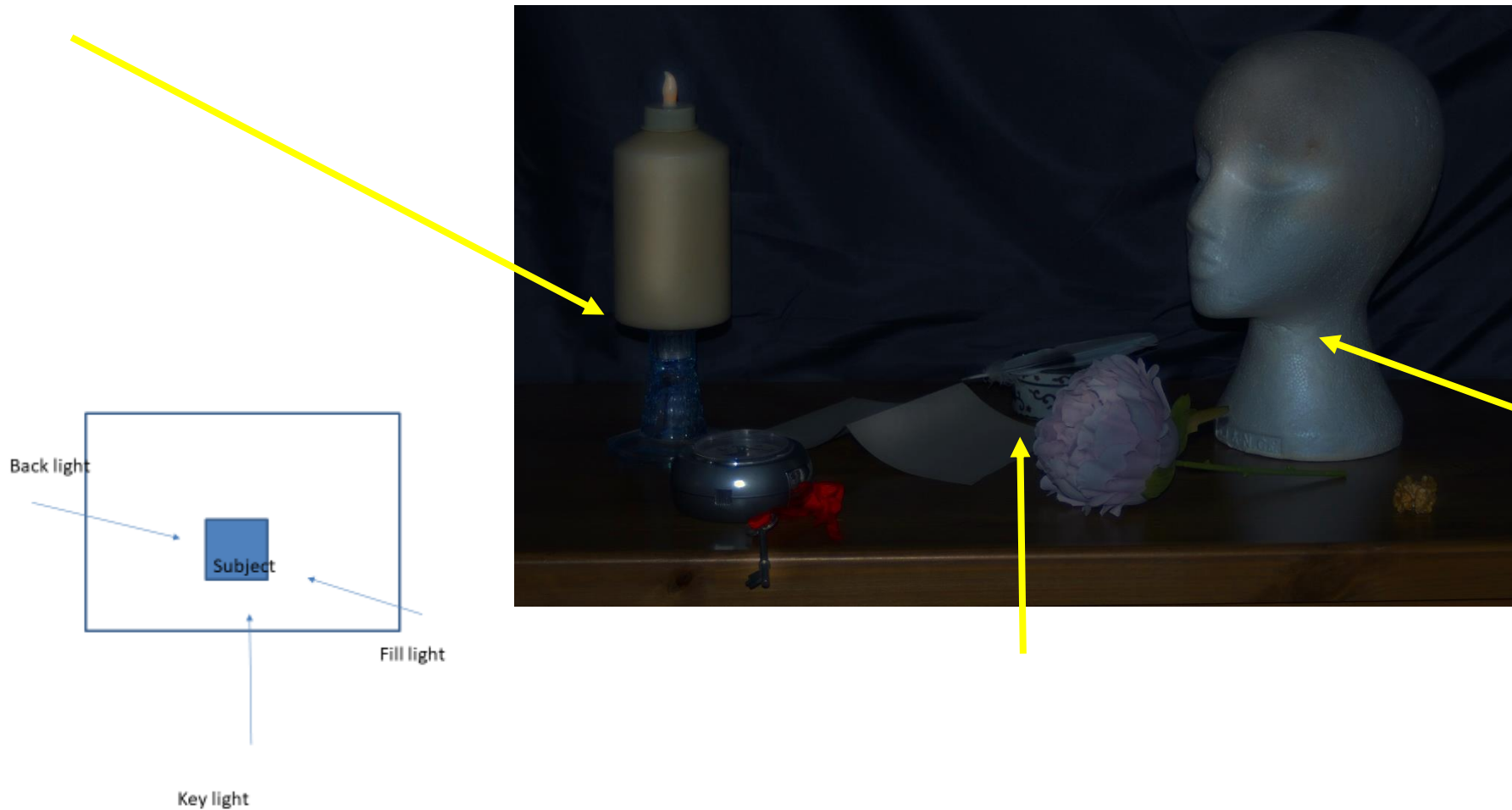
For this composition your natural and key light need to be directed at the subject from a 90 degree angle.

Side or Directional lighting in the style of the Dutch Realists

For this composition, the key light needs to be placed higher than and pointing directly towards the main subject, in this case the head. The best light source would be the morning sun filtering through a window. If this is not practical you could use a lamp with a warm coloured bulb.



Low Lighting or Chiaroscuro



In this composition, the lighting is kept low, with the remainder of the still life dark. Note the softness of the chiaroscuro effect, the highlight catching the the object.





Be influenced by your artist research. Create a scenario that you can photograph. This could be a still life display, an interior shot or a scenario you come across. Your photography should show a response to your artists' work and ideas based on Time and Space. You should show that you have understood the use of light, form, composition, angle, depth and perspective in the work. What is the focus of the image? Try out a variety of photographic effects on your own images.



Here, a sense of time is suggested by the darkening image and lack of bright sunlight. The final study using a blue filter links to the work of John Dugdale.