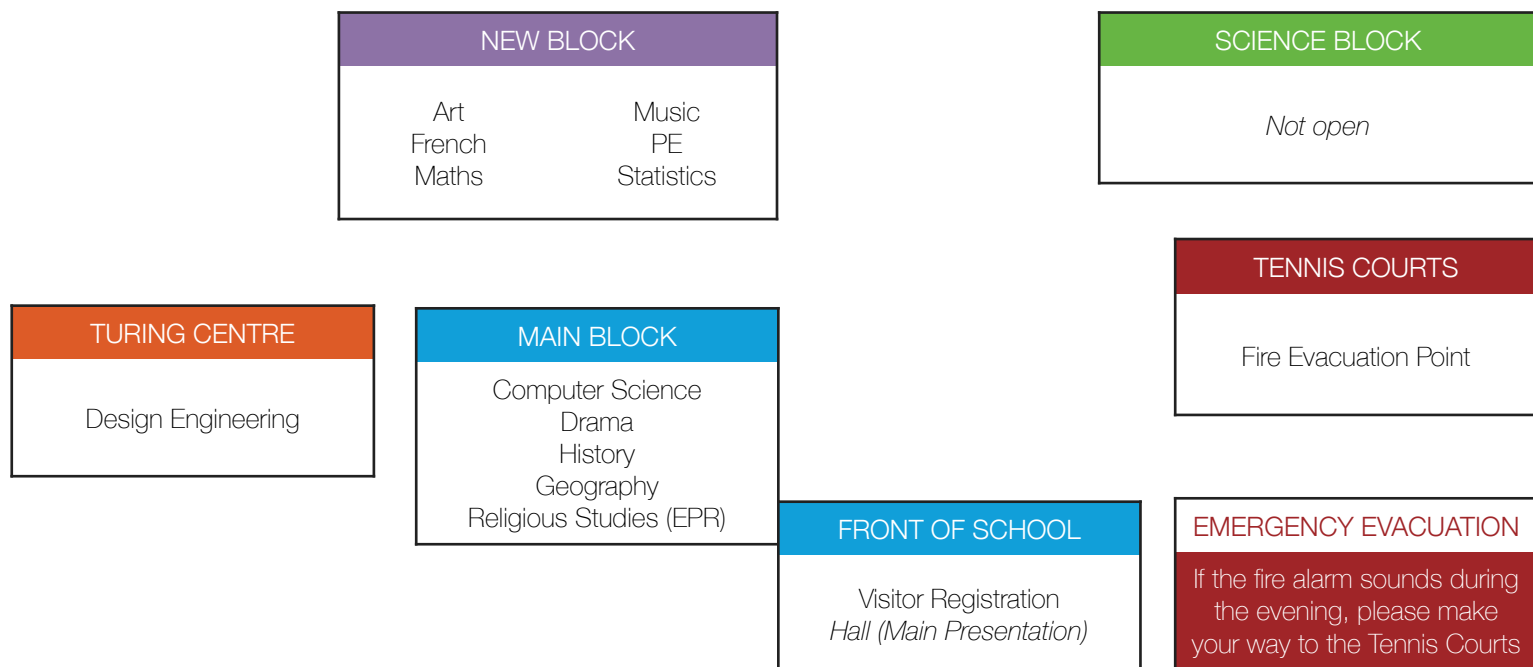


Overview of School Site

School Field



Front of School (A15)

Main Block	
Computer Science	CS2 (upstairs)
Geography	Geography 1, 2 & 3 (downstairs)
History	History 1 & 2 (downstairs)
Religious Studies (EPR)	EPR 2 & 3 (downstairs)
Drama	Drama Studio (downstairs)

- All departments are open from 17:30 until 20:00.
- Current students are available in departments. They will be able to tell you what it is like to study each subject at GCSE.
- Our careers advisor Mrs Elliot is available to offer careers advice throughout the evening.
- Please contact Mrs Hall via GCSEoptions@bourne-grammar.lincs.sch.uk with any questions that you have following Options Evening.

New Block	
Art	Art 2 (upstairs)
French	MFL 3 (upstairs)
Music	Music 1 & 2 (downstairs)
PE	PE1 & MFL9 (downstairs)
Statistics	Maths 2 (downstairs)
Statistics & Further Maths	Maths 1 (downstairs)

Main Presentation

At 18:00 and 19:00, Mr Brown (Deputy Headteacher) will give a talk lasting roughly 15 minutes in the Main Hall, setting out the Options Process for those who have booked tickets online in advance.

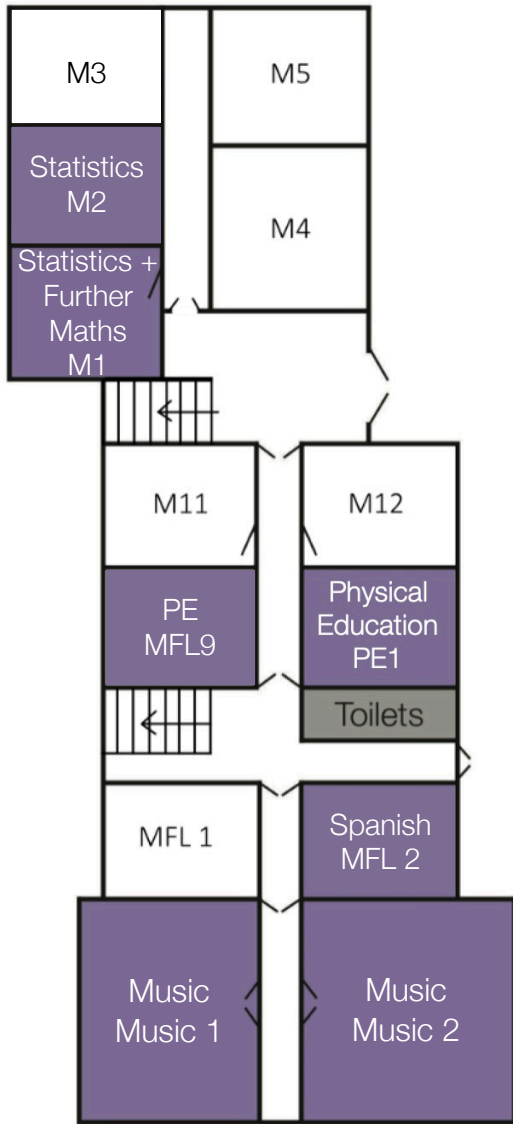
Turing Centre	
Design Engineering	Design Engineering 1

Learn about our Core Curriculum [here](#).

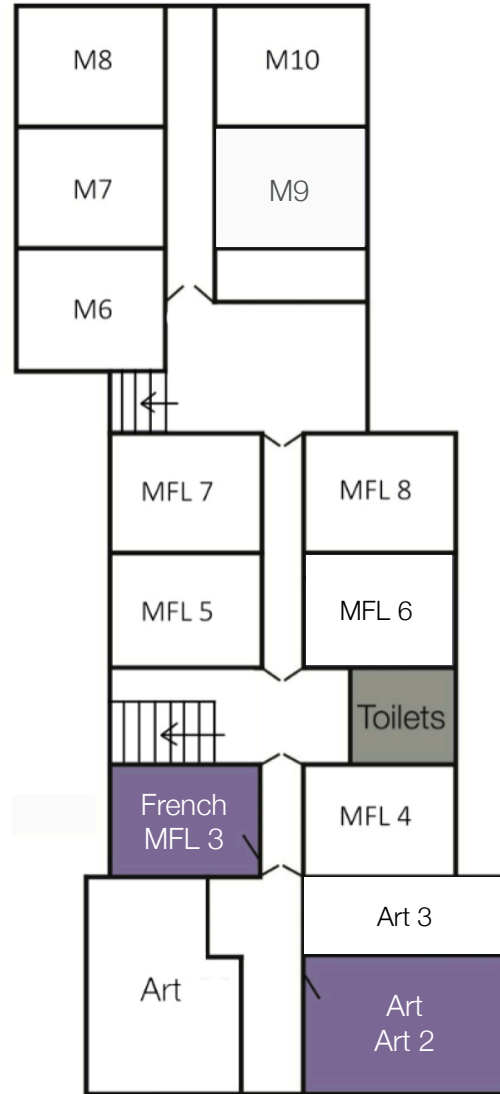
Learn about our Options Subjects [here](#).

New Block

Ground Floor

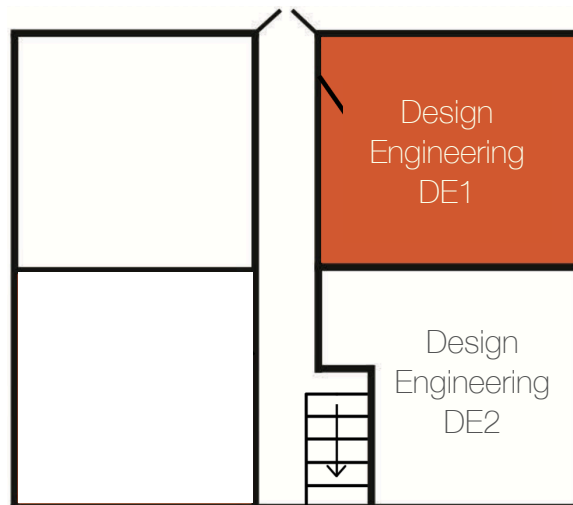


First Floor



Turing Centre

Ground Floor



Main Building

